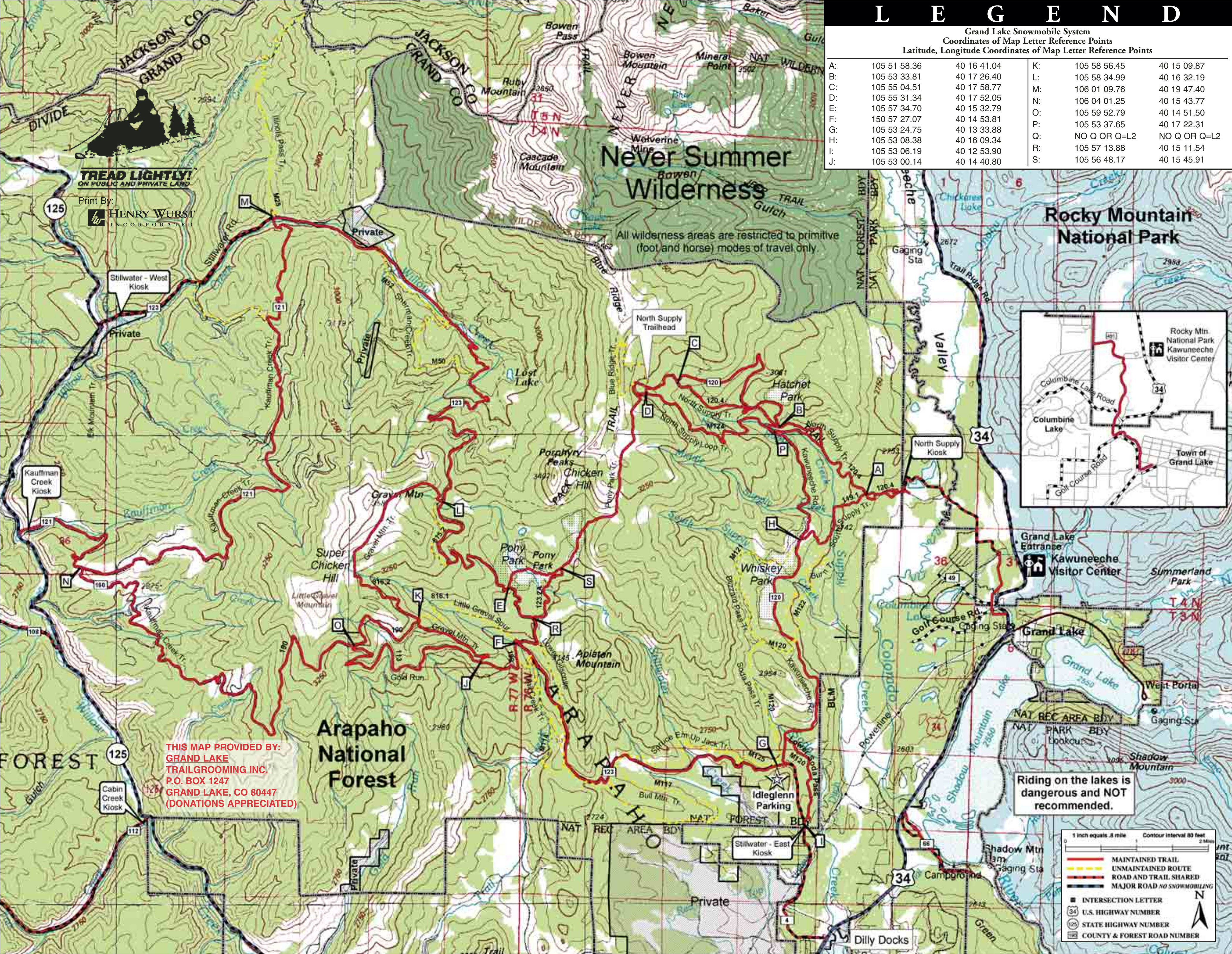


L E G E N D

Grand Lake Snowmobile System
Coordinates of Map Letter Reference Points
Latitude, Longitude Coordinates of Map Letter Reference Points

A:	105 51 58.36	40 16 41.04	K:	105 58 56.45	40 15 09.87
B:	105 53 33.81	40 17 26.40	L:	105 58 34.99	40 16 32.19
C:	105 55 04.51	40 17 58.77	M:	106 01 09.76	40 19 47.40
D:	105 55 31.34	40 17 52.05	N:	106 04 01.25	40 15 43.77
E:	105 57 34.70	40 15 32.79	O:	105 59 52.79	40 14 51.50
F:	150 57 27.07	40 14 53.81	P:	105 53 37.65	40 17 22.31
G:	105 53 24.75	40 13 33.88	Q:	NO Q OR Q=L2	NO Q OR Q=L2
H:	105 53 08.38	40 16 09.34	R:	105 57 13.88	40 15 11.54
I:	105 53 06.19	40 12 53.90	S:	105 56 48.17	40 15 45.91
J:	105 53 00.14	40 14 40.80			



TREAD LIGHTLY!
ON PUBLIC AND PRIVATE LAND

Print By:
HENRY WURST
INCORPORATED

All wilderness areas are restricted to primitive (foot and horse) modes of travel only.

THIS MAP PROVIDED BY:
GRAND LAKE TRAILGROOMING INC.
P.O. BOX 1247
GRAND LAKE, CO 80447
(DONATIONS APPRECIATED)

Riding on the lakes is dangerous and NOT recommended.

1 inch equals .8 mile Contour interval 80 feet

— MAINTAINED TRAIL
— UNMAINTAINED ROUTE
— ROAD AND TRAIL SHARED
— MAJOR ROAD NO SNOWMOBILING

A INTERSECTION LETTER
34 U.S. HIGHWAY NUMBER
125 STATE HIGHWAY NUMBER
108 COUNTY & FOREST ROAD NUMBER

GRAND LAKE SNOWMOBILE COUNTRY

WELCOME TO THE GRAND LAKE TRAIL SYSTEM

We hope that you have a great time while you are here. This system is the largest groomed system in the state of Colorado. As of 1985, approximately 110 miles of trails are maintained by the Grand Lake Trail System, a private, non-profit organization in conjunction with the U.S. Forest Service. The Grand Lake Trail System provides one of the most superior experiences for snowmobilers anywhere - everything from simple trails to the most sophisticated and challenging. We believe you will find the Grand Lake Trail System to be a safe and enjoyable experience. Please read and follow the rules and regulations in the Grand Lake Snowmobiling.

SPEED LIMITS

The speed limit on snowmobiles is 42 mph on groomed trails and 40 mph on ungroomed trails. On U.S. 24 and County Road 191, these limits may vary. For more information, please contact the Grand Lake Trail System. Although many of the trails are groomed, the weather may vary. Many curves are narrow and blind. Please exercise caution and respect the safety of the other snowmobilers.

AVALANCHE WARNINGS

When you are in the mountains, please be aware of the avalanche danger. Call the US Forest Service office in Granby 887-4100 or call the Avalanche Center in Denver 1-303-499-9630. All snowmobilers should know how to avoid traveling in an avalanche and being caught by one. Don't turn a great time into a tragedy.

PRIVATE PROPERTY

Please do not enter the system on private property. It is unlawful to ride on private property without the permission of the owner. Please obey all "no trespassing" signs and stay on designated trails.

R & J Liquors
across from banks

Friendly Faces • Colorado Lottery • Best Buys

Robert & JoAnn Anderson - Owners
P.O. Box 3174
88 E. Agate
Granby, CO 80446
(970) 627-2318

Trail Ridge Power Sports

Chuck Tinkler
General Manager

P.O. Box 608
10438 U.S. Highway 34
Grand Lake, CO 80447
800.627.8834
970.627.3806
970.627.8047
www.trailridgepowersports.com

On The Trail
Snowmobile Rentals

ALPINE ARCTIC CAT
On The Trail
RENTALS

Jim Hold
Owner

800 BOX 1675
GRAND LAKE CO,
80447

(970) 627-8966
(970) 627-0171
888-627-2629
FAX: 627-0693

EMAIL: onthetrail@cowebink.net
WEB: www.onthetrailrentals.com

THE CRABTREE COMPANY

P.O. Box 26, GRANBY, COLORADO 80446
P.O. Box 702, GRAND LAKE, COLORADO 80447

ELMER CRABTREE
Broker, Licensed Appraiser
Grand Lake 970-627-3430

Grand Lake Fax 627-3434
Granby Fax 627-2129
Granby 970-627-2128

www.crabtreeproperties.com

WESTERN RIVIERA

ON BEACH U.S. GRAND LAKE - IN THE VALLEY

MOTEL

970/627-3580 • Fax 970/627-3320
www.westernriv.com
419 Garfield Ave., Grand Lake, CO 80447

Wizard Repair

Andy Sulik

(970) 627-8122
P.O. Box 1095
Grand Lake, CO 80447
Call (970) 531-3005

Specializing in all
Recreational Power Sports
Repair

BLACK BEAR LODGE
GRAND LAKE - COLORADO

12255 HIGHWAY 34
B.O. BOX 609
GRAND LAKE, CO 80447

www.blackbeargrandlake.com
blackbeargrandlake@rymtnhi.com

970.627.3654

TOLL FREE
1.800.766.1123

AIN'T LIFE GRAND PROPERTY MANAGEMENT CO.
"SERVING GRAND LAKE'S MANAGEMENT NEEDS"

WWW.ALGRAND.COM

MORRIS KING OR MICHELLE (MICKI) MAY
970-627-0020
877-877-2888 TOLL FREE
970-531-3311 CELL

ERA Grand Realty, Inc.

Judy M. Burke, CRS

Office: (970) 627-2905
Fax: (970) 627-9360
Mobile: (970) 531-1008
Dir. Denver: (303) 449-2900
E-Mail: judy@grandlakeera.com

970.627.1404

Sagebrush
BBQ & GRILL

THE PRAMPT PLACE

NOT JUST GREAT BBQ!

STEAK, FISH, SANDWICHES & GREAT DESSERTS

ACROSS FROM THE PARK IN DOWNTOWN GRAND LAKE
WWW.SAGEBRUSHBBQ.COM

RE/MAX

Resorts of Grand County, Inc.
An Independently Owned and Operated

Andrea Cox
Managing Broker

78 Grand Ave. 10 (at 29)
Grand Lake, Colorado 80447
Office: 970-627-8001
Mobile: 970-531-0004
Home: 970-627-2918 Fax: 970-627-8100

Ray & Julia Blanchard - Owners

The Terrace Inn
Dining & Lodging

813 Grand Ave
Grand Lake, CO 80447

Telephone (970) 627-3000
www.grandlaketerraceinn.com

CORNER CUPBOARD
Restaurant & Bar

Open 7 Days a Week at 7:00 a.m.
Breakfast • Lunch • Dinner

The food is good, the price is less,
but you're the judge.

Late Night Breakfast
Friday & Saturday 11:00 a.m. - 1:00 a.m.

725 GRAND AVE. (AT THE WAGONWAY)
627-8312

The Gateway Inn

Grand Lake's
Premier Lodging

- Log furnished
- Laundry
- Food & Beverage
- Hot Tub & Sauna
- Weight Room
- Massage Therapy
- Tanning & Arcade
- Conference Center

For Reservations:
(970) 627-4332 (970) 627-7400 www.gatewayinn.com

14628 U.S. Hwy. 34 • P.O. Box 550 • 970-627-3479

Lakeview
Grand Lake, Colorado

WINDING RIVER RESORT

Grand Lake, CO 80447

(970) 627-3215

Sleigh Rides
Cabins

Pager # 7761761 Office: 970 627 3156

24 Hour
Quality
Plumbing
Service

K.B.L. SERVICES, INC.

Affordable
Pipes

Keith B. Lawson
Owner

P.O. Box 1051
Grand Lake, CO 80447

The Mountain Inn
Restaurant & Bar

Eat Here!
The Food Rocks!
And it's affordable!

Breakfast, Lunch & Dinner
Open at 7:00 a.m.

970-627-3385
612 Grand Avenue
Grand Lake, Colorado 80447

Where there is something delicious for everyone!

Caroline's Cuisine

Located on the Soda Springs
Ranch

9921 U.S. HWY 34 #27 GRAND LAKE COLORADO
970-627-9404 AAA & MOBIL GUIDE APPROVED

SPIRIT LAKE LODGE
Residents of the Lakes
Served by Mountaineers
Snowmobile Rentals

800/544-6793
970/627-3344

Karynna & Ziggy Sahon

P.O. Box 66
Grand Lake, CO 80447

NAPA AUTO PARTS

240 West Agate Ave.
Granby, Co. 80446

Phone: 970-887-2568
Fax: 970-887-2653
Email: napaauto@krymtnhi.com

Grand Lake Lanes

Come join the fun at Grand Lake Lanes!
Bowling, pizza, full bar, pool, televised sporting
events and video games.
Check out league bowling, teen night, private parties
and children's birthday parties.

824 Grand Avenue • P.O. Box 2086
Grand Lake, Colorado 80447-2086
Phone: 970-627-3373
E-Mail: bowl@grandlakelanes.com
Website: www.grandlakelanes.com

GRAND ESCAPE COTTAGES

Located at the End of the
Boardwalk...
"a stone's throw from the lake"

Owners:
Tom & Mary Goodfellow

PO Box 97
1204 Grand Ave.
Grand Lake, CO 80447

(970) 627-3410
(970) 531-1915 - Cell
www.come.to/grandescape
email: escape@krymtnhi.com

Lake View Bed & Breakfast

Evelyn & Delmer Schmittker

970-627-1200

164 Lake View Drive (County Road 465)
Grand Lake, Colorado 80447
www.lakeviewbedbreakfast.com

Grand Valley Flooring

Covering All of Grand County
Mobile Sales

Stan D. Brown, Sr.
520 W. Grand Avenue • Grand Lake, CO 80447
Members of NAFB

Mexican & American Cuisine
Full bar with Margaritas on tap

PANCHO LEFTYS

117 Grand Ave.
Grand Lake, CO 80447

Phone: 970-627-3273

GRAND LAKE PLUMBING CO.

Frank Appelhans

Grand Lake: 970-627-1111
Denver: 303-441-2502

franka@grandlakeplumbing.com
www.grandlakeplumbing.com

P.O. Box 529 • Grand Lake • Colorado 80447

LONE EAGLE LODGE
Snowmobile Rentals
and
Gas Station

Robbie and Janusz

1-800-292-3311 • 970-627-3310 • 627-3281 Station
712 Grand Ave. • P.O. Box 1163 • Grand Lake, CO 80447

TIMBERLINE INSURANCE PROFESSIONALS

Health - Life - Auto - Home
Business - Commercial - Worker's Compensation
Individual and Small Business

Specializing in Health Savings Account-HSA's

1-888-213-9589 or timberline_2@msn.com

Daven Haven Lodge
Grand Lake Colorado
www.davenhavenlodge.com

Back Street Steakhouse
Voted Best Holiday Décor in Grand County
We Welcome Snowmobilers
970-627-8144 reservations

MOUNTAIN FOOD MARKET
GRAND LAKE, COLORADO

Grand Lake's full service
grocery store - Open Daily
400 Grand Ave. - 627-3470

GAMBLES OF GRANBY

APPLIANCES, TELEVISIONS AND ELECTRONICS

200 W. AGATE, UNIT F
887-3335

CASEY AND RHONDA FARRELL

Garden Grill and Country Inn

1000 Grand Ave
P.O. Box 1618
Grand Lake, CO 80447

Restaurant • Lounge • Catering Service

970/627-8404
www.egscountryinn.com

Bighorn Lodge
Your Hosts: Barbara & Al Kalksdorf

"Love yourself - first yourself..."
Located next to Colorado's Playground
Rocky Mountain National Park

Best Value Inn

970/627-8101
800/341-8000
www.krymtnhi.com/bighorn

AAA

615 Grand Ave
PO Box 1760
Grand Lake, CO 80447

GRAND ADVENTURES LLC

P.O. Box 1248 • Grand Lake, CO 80447
US Hwy. 34 and Golf Course Road
Phone: 970-627-3096 • Fax: 970-627-5456 • 800-894-3336
info@grandadventures.com

Free road, outdoor recreational activities including
snowmobiling, sleigh rides, and horseback rides.

THE RAPIDS LODGE & RESTAURANT INC.

THE RAPIDS AWARD WINNING
RESTAURANT SERVES DINNER
STARTING AT 5:00 PM

209 Rapids Lane
Grand Lake, CO 80447
www.rapidslodge.com
970.627.3707

Open 7 Days

Trail Map
Snowmobile
Grand Lake

Additional Thanks to:
Timed Stakes Forest Service
The Town of Grand Lake
Rocky Mountain National Park
Recreation District
Grand Lake Metropolitan
Grand County
Colorado State Parks

SPECIAL THANKS TO:

Grand Lake Trail Groomers, Inc.
P.O. Box 1247 Grand Lake, CO 80447
Grand Lake Chamber of Commerce
(970) 627-3402 or (970) 627-3452
www.grandlaketrailgroomers.com
P.O. Box 37, Grand Lake, CO 80447

GENERAL INFORMATION

Grand Lake Metropolitan Recreation District
owns and operates a full service Cross Country Touring Center
For more information and rates please call (970) 627-3005

Grand County Sheriff's Office (970) 725-3343
Emergency 911
Grand Lake Metro. Rec. District (970) 627-8328
National Park Service (970) 627-3471
Town of Grand Lake (970) 627-3435

AVALANCHE POTENTIAL
US Forest Service - Granby (970) 887-4100
Avalanche Center - Denver (303) 499-9650

Produced by Grand Lake Trail Groomers, Inc. in Cooperation with Grand
Lake Metropolitan Recreation District, U.S. Forest Service and
National Park Service

The Grand Lake Snowmobile Trail Map was made possible in part by area
businesses advertising in this map. Please thank them with your support!

POINTS OF SAFETY

1. Check the avalanche potential where you intend to ride.
2. Make sure each machine is equipped with at least the following: electrical matches, non-perishable food such as granola bars, space heater, spare tire, spare wheel. Many sporting goods stores sell inexpensive survival kits. They are compact and contain many of the items you need to save your life.
3. Pay attention to the weather. Storms can and do form rapidly in the mountains. Allow for variations that be dangerous.
4. Take fuel with you if you plan to ride for extended distances or for a lengthy period.
5. Watch for grooming equipment. These machines are large and do not slow down quickly as you do. Be patient, as the tow vehicle will stop well ahead of you.
6. Obey all avalanche warning signs. Do not go into areas marked off by such signs.
7. Don't drink and ride. Although "soberly" doesn't define "sober" and neither does "sober" mean "very, very, very sober".
8. Always wear a helmet. A helmet could prevent you from serious injury.
9. Make sure that someone knows where you are going and when you intend to be back. Give them a description of your clothes and of the machines you will be riding. If you do not return at the specified time, they should call the Grand County Sheriff's Department at 725-3343. RFMVSEER lets them know when you have returned.
10. If you become involved in an accident, call 911. Do not leave the scene if you think you know where you are going. If you know where you are, just call.
11. Use extreme caution when driving. Many of the trails are narrow and often the other side that you cannot see. If you are coming, avoid going over the other side unless you know exactly what is there.

Prepared by: Grand Lake Trail Grooming, Inc.
Revised 2004-2005
Grand Lake Trailblazers
The Advertisers
Spirit Lake Lodge & Snowmobile Rentals
On The Trail Snowmobile Rentals
Lone Eagle Lodge & Snowmobile Rentals
Grand Adventurers LLC
Grand Adventurers LLC
Timed Stakes Forest Service